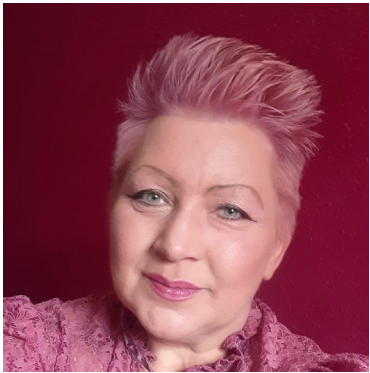




BAmEed
Black, Asian & Minority Ethnic
BAMEed Wales

How do you Identify?



S4C

BAiEed
Black, Asian & Minority Ethnic
EDUCATORS
BAMEed Wales

How do you Identify?



How do you Identify?



How do you Identify?



**How does your friend/
partner identify?**



How does your teacher identify?

I'm profoundly Deaf from birth but depending on the environment I speak or sign

I'm a half Chinese half Welsh woman.

I'm African Caribbean.

I identify as a disabled writer, director and actor who has worked in the industry for over 25 years.

I proudly identify as a lesbian.

I'm Black.

I'm Kay, a trans nonbinary person.

I am 21 years old and live in Llanelli. I am autistic and live a happy and full life.

As a Black woman living in Wales

I'm Leo, a trans man from Cardiff.

I am a Black British woman.

Born in India, Narinder moved to Britain with his family when he was a child.

I'm dual-heritage Welsh-Indian, born and brought up in Haverfordwest.

I'm a freelance artist and queer student from Carmarthen.

I am a black gay, Welsh woman of Caribbean descent.